



# Rab 24 Polyclonal Antibody

<b>Catalog No</b>	YP-Ab-16191
<b>Isotype</b>	IgG
<b>Reactivity</b>	Human;Mouse;Rat
<b>Applications</b>	IHC;IF;ELISA
<b>Gene Name</b>	RAB24
<b>Protein Name</b>	Ras-related protein Rab-24
<b>Immunogen</b>	Synthesized peptide derived from Rab 24 . at AA range: 90-170
<b>Specificity</b>	Rab 24 Polyclonal Antibody detects endogenous levels of Rab 24 protein.
<b>Formulation</b>	Liquid in PBS containing 50% glycerol, 0.5% BSA and 0.02% sodium azide.
<b>Source</b>	Polyclonal, Rabbit,IgG
<b>Purification</b>	The antibody was affinity-purified from rabbit antiserum by affinity-chromatography using epitope-specific immunogen.
<b>Dilution</b>	WB 1:500-2000 ,IHC: 1/100 - 1/300. ELISA: 1/10000.. IF 1:50-200
<b>Concentration</b>	1 mg/ml
<b>Purity</b>	≥90%
<b>Storage Stability</b>	-20°C/1 year
<b>Synonyms</b>	RAB24; Ras-related protein Rab-24
<b>Observed Band</b>	
<b>Cell Pathway</b>	Cytoplasm, cytosol . Membrane ; Lipid-anchor . Only about 20-25% is recovered in the particulate fraction. .
<b>Tissue Specificity</b>	Amygdala,Pancreas,Skin,Uterus,Whole embryo,
<b>Function</b>	function:May be involved in autophagy-related processes.,induction:By extensive retinoic acid treatment, in Ntera-2 teratoma cell line induced to differentiate into post-mitotic neurons (NTN2) (at protein level).,miscellaneous:The unusual Ser-67, instead of a conserved Gln in other family members, is the cause of low GTPase activity. As a result, the predominant nucleotide associated with the protein is GTP.,PTM:Isoprenylation is inefficient compared to other Rab family members.,similarity:Belongs to the small GTPase superfamily. Rab family.,subcellular location:Only about 20-25% is recovered in the particulate fraction.,subunit:Unlike other Rab family members, does not interact with GDP dissociation inhibitors (GDIs), including ARHGDI and ARHGDIIB.,
<b>Background</b>	RAB24 is a small GTPase of the Rab subfamily of Ras-related proteins that regulate intracellular protein trafficking (Oikkonen et al., 1993 [PubMed 8126105]).[supplied by OMIM, Aug 2009],

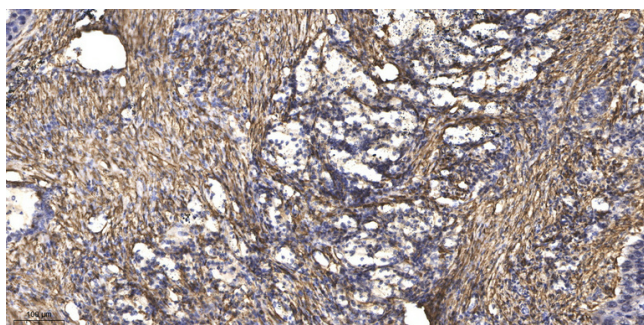
**matters needing attention**

Avoid repeated freezing and thawing!

**Usage suggestions**

This product can be used in immunological reaction related experiments. For more information, please consult technical personnel.

## Products Images



Immunohistochemical analysis of paraffin-embedded human Squamous cell carcinoma of lung. 1, Antibody was diluted at 1:200(4° overnight). 2, Tris-EDTA,pH9.0 was used for antigen retrieval. 3,Secondary antibody was diluted at 1:200(room temperature, 45min).